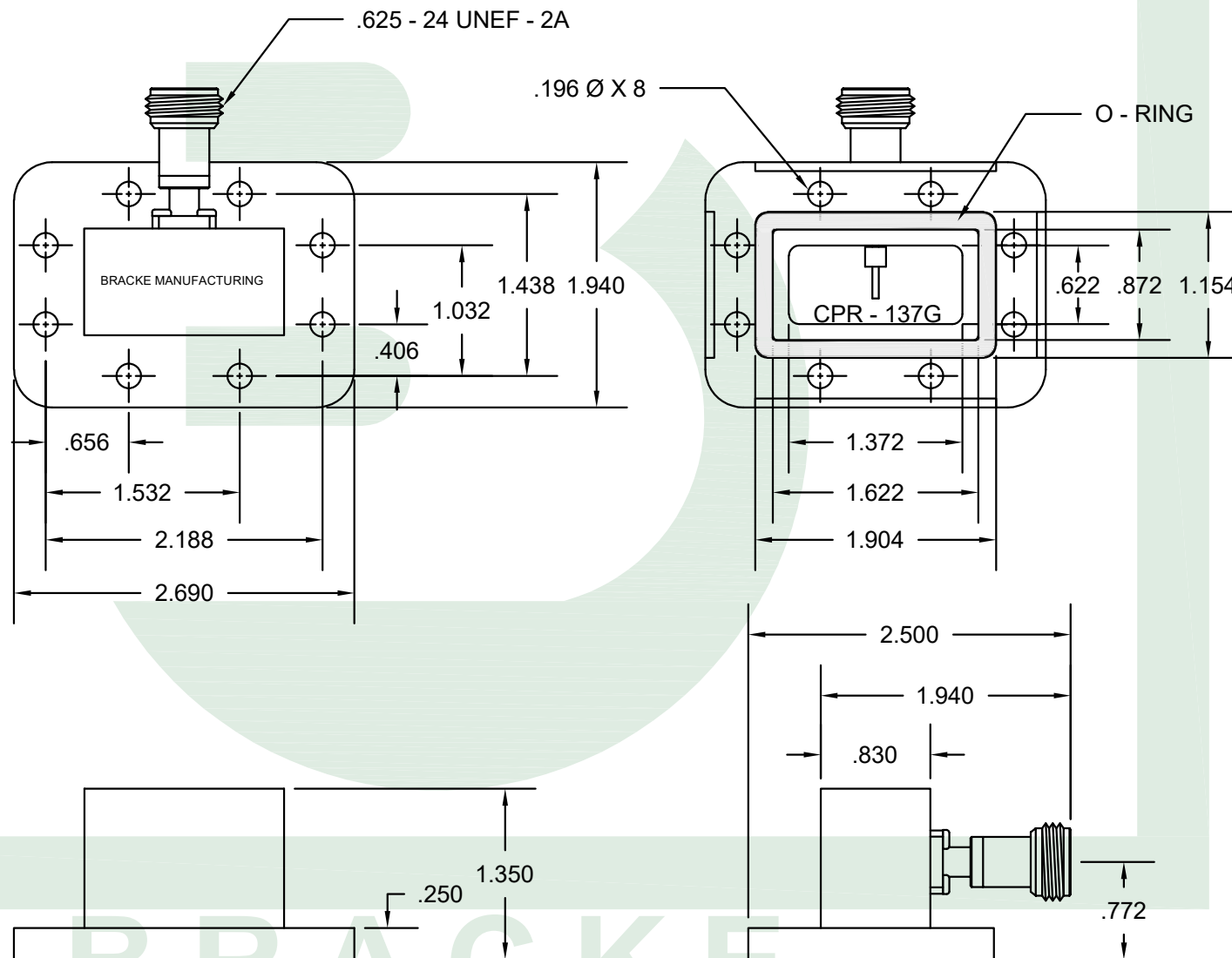


M A T E R I A L S	WAVEGUIDE BODY	ALUMINUM
	CONNECTOR	PASSIVATED STAINLESS STEEL
	CONTACT	GOLD PLATED
	INSULATOR	PTFE
	O - RING	RUBBER
E L E C T R I C A L S	IMPEDANCE (OHM)	50
	WAVEGUIDE	CPR - 137G
	FREQUENCY RANGE (GHz)	5.85 - 8.20
	VSWR (MAX)	1.30:1



**Bracke Manufacturing, LLC**  
 PO Box 12319  
 Newport Beach, Ca 92658  
 Phone (949)756-1600 / Fax (949) 756-1601  
 sales@brackemfg.com / www.brackemfg.com

Part Number	
<b>BM75028</b>	
Produced By	Checked By
002	013

**Description**  
**N Female to CPR-137G**  
 Frequency Range 5.85 - 8.20 GHz [Waveguide with O-Ring]

**Notes**

- Bracke Manufacturing, LLC reserves the right to change any specifications at any time in its sole discretion without notice.
- The depiction above was produced by and is the sole property of Bracke Manufacturing, LLC and may not be copied or reproduced in any manner without Bracke's prior written consent.

©2022 Bracke Manufacturing, LLC

CAGE / NAGE	
6LOW2	
Scale	Unit
3/4:1	Inches
Date	Revision
11/18/2022	A-01