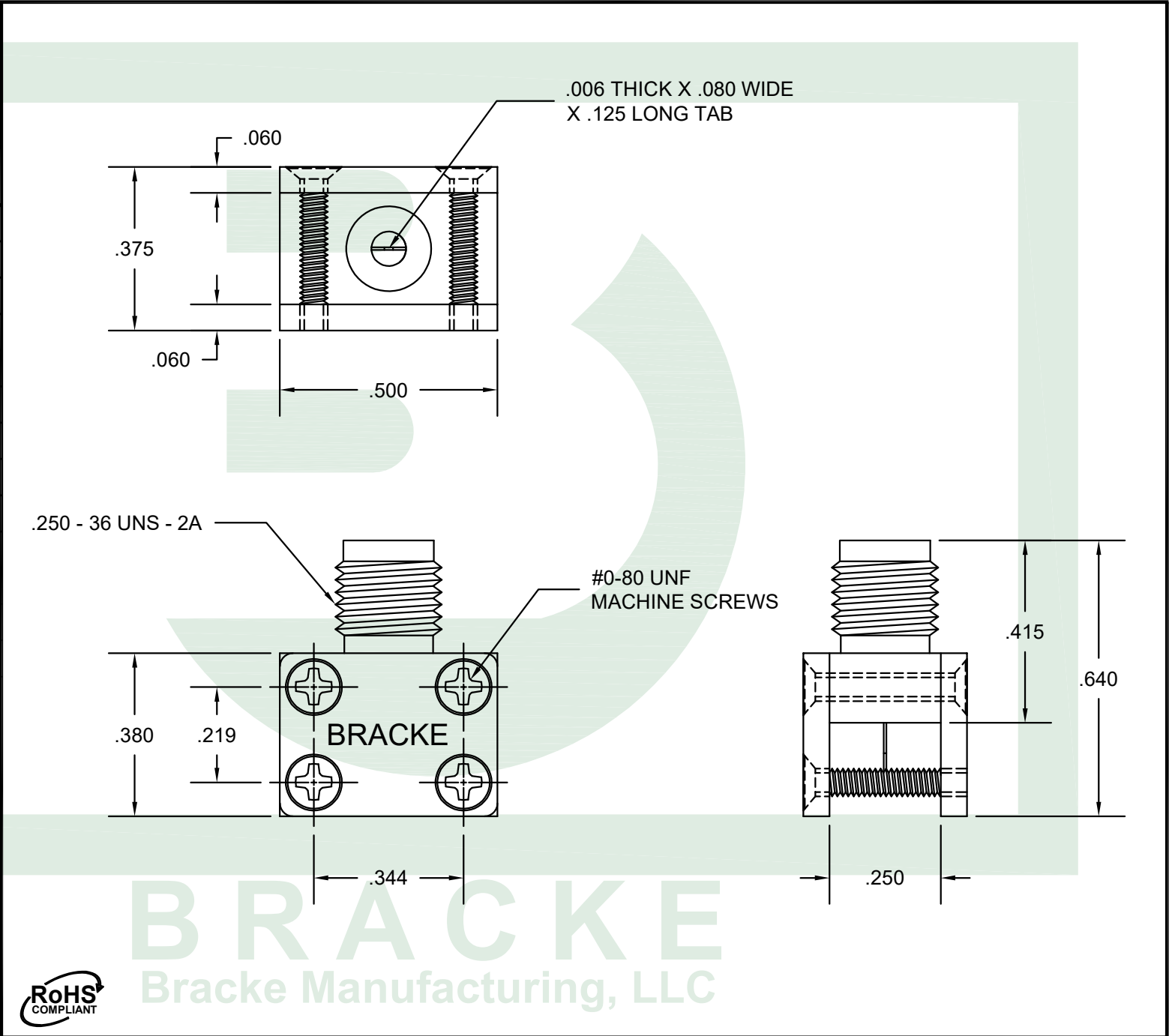
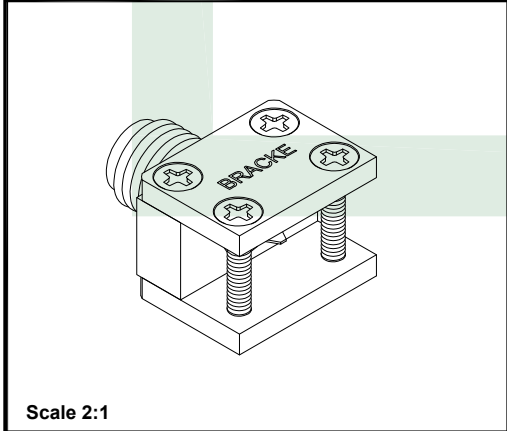



MATERIALS	
BODY	BRASS NICKEL PLATED
CONTACT	GOLD PLATED
INSULATOR	PTFE
ELECTRICAL & ENVIRONMENTAL CHARACTERISTICS	
IMPEDANCE	50 OHM
INSULATION RESISTANCE	5000 MΩ
OPERATING FREQUENCY	18 GHz
DIELECTRIC WITHSTANDING VOLTAGE	1000 Vrms
VSWR TYPICAL	1.25:1
INSERTION LOSS TYPICAL	.06 $\sqrt{\text{Freq. GHz}}$
OPERATING TEMPERATURE	-65 to +165 C°
VOLTAGE RATING	500 VOLTS
INTERFACE	MIL-STD-348
VIBRATION	MIL-STD-202 METHOD 204, CONDITION A
CORROSION	MIL-STD-202 METHOD 101, CONDITION B



 <b>Bracke Manufacturing, LLC</b> PO Box 12319 Newport Beach, Ca 92658 Phone (949)756-1600 / Fax (949) 756-1601 sales@brackemfg.com / www.brackemfg.com	Part Number		Description		CAGE / NAGE	
	<b>BM60924</b>		<b>SMA Female Stripline End Launch, 1/4" Ground Plane .080" X .006" Captive Tab Contact [Connector]</b>		6LOW2	
					Scale	Unit
	Produced By	Checked By	<b>Notes</b> <ul style="list-style-type: none"><li>• Bracke Manufacturing, LLC reserves the right to change any specifications at any time in its sole discretion without notice.</li><li>• The depiction above was produced by and is the sole property of Bracke Manufacturing, LLC and may not be copied or reproduced in any manner without Bracke's prior written consent.</li></ul> <div>©2023 Bracke Manufacturing, LLC</div>		3:1	Inches
	002	007			Date	Revision
			9/21/2023	A-01		