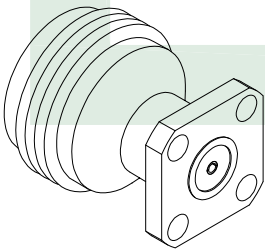


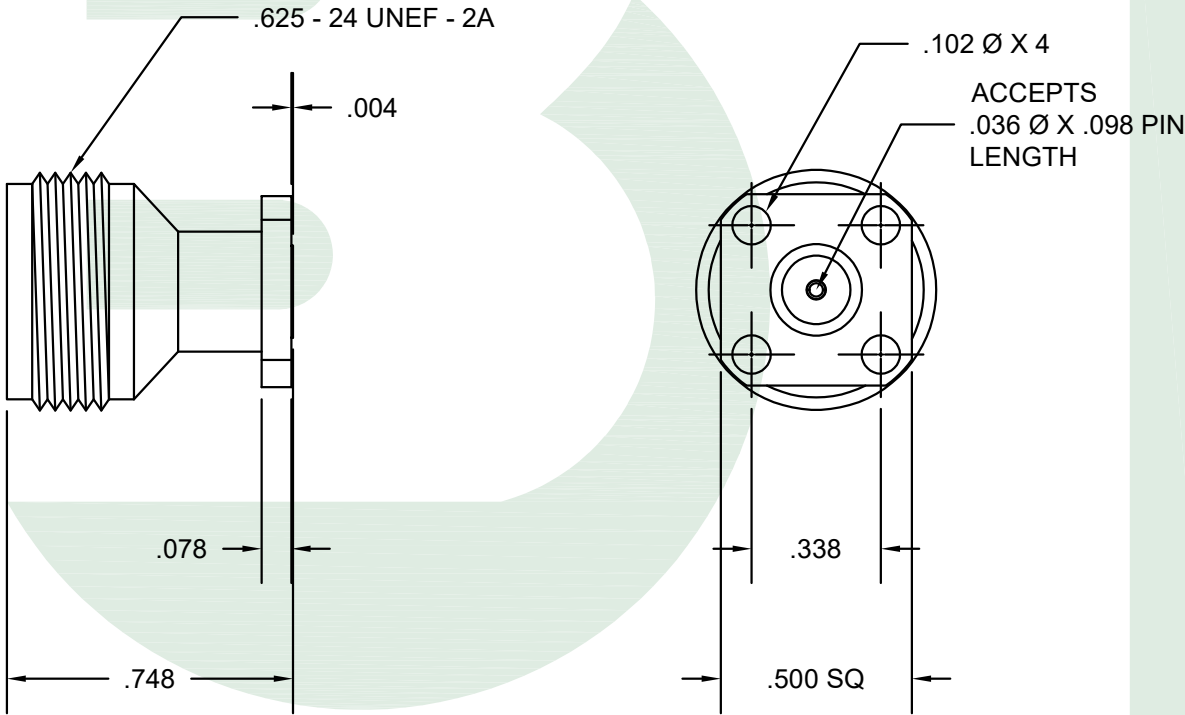
MATERIALS	
BODY	PASSIVATED STAINLESS STEEL
CONTACT	GOLD PLATED
INSULATOR	PEI / PTFE
ELECTRICAL & ENVIRONMENTAL CHARACTERISTICS	
IMPEDANCE	50 OHMS
INSULATION RESISTANCE	5000 MQ
OPERATING FREQUENCY	18 GHz
DIELECTRIC WITHSTANDING VOLTAGE	1500 Vrms
VSWR MAX	1.15:1
INSERTION LOSS MAX	.05 $\sqrt{\text{Freq. GHz}}$
OPERATING TEMPERATURE	-55 to +165 C°
VOLTAGE RATING	1000 VOLTS
INTERFACE	MIL-STD-348
VIBRATION	MIL-STD-202 METHOD 204, CONDITION A
CORROSION	MIL-STD-202 METHOD 101, CONDITION B




Scale 1.5:1



BRACKE  
Bracke Manufacturing, LLC



 <b>Bracke Manufacturing, LLC</b> PO Box 12319 Newport Beach, Ca 92658 Phone (949)756-1600 / Fax (949) 756-1601 sales@brackemfg.com / www.brackemfg.com	Part Number		Description		CAGE / NAGE	
	<b>BM61665</b>		<b>N Female 4 Hole Panel Mount, .500" Sq. Flange</b> <b>Accepts .036" X .098" Pin [Field Replaceable Connector]</b>		6LOW2	
	Produced By	Checked By	Notes		Scale	Unit
	002	014	• Bracke Manufacturing, LLC reserves the right to change any specifications at any time in its sole discretion without notice. • The depiction above was produced by and is the sole property of Bracke Manufacturing, LLC and may not be copied or reproduced in any manner without Bracke's prior written consent.		2:1	Inches
			©2025 Bracke Manufacturing, LLC		Date	Revision
					8/13/2025	A-01